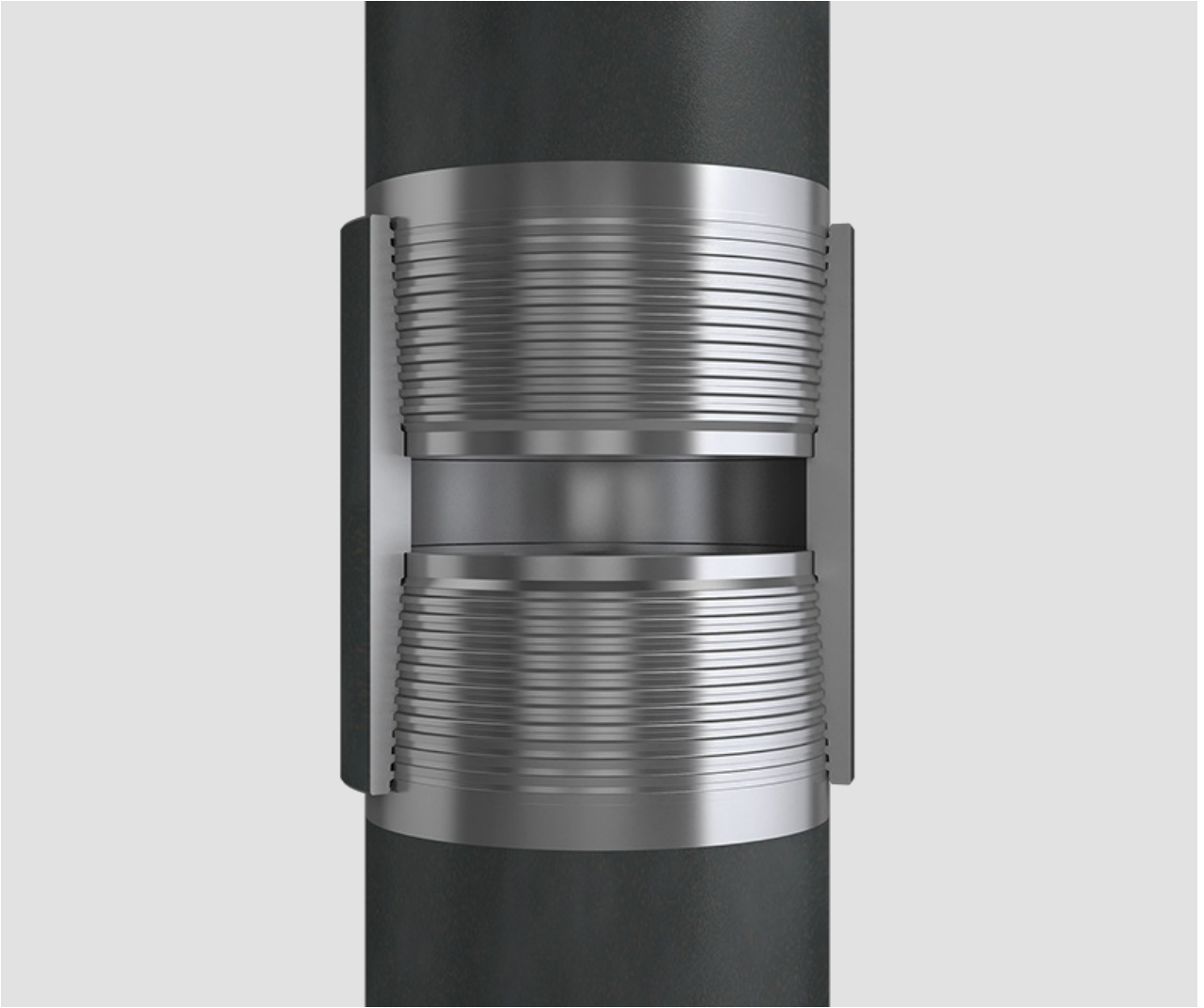


TMK UP™ MAGNA



TMK UPTM Magna

LITE SERIES

Range: 8-5/8" – 20" / 219,08 mm – 508 mm

Unique Feature

- Proprietary engineered thread form
- Fastest assembling large diameter semi-premium connection

Thread Profile

- Deep and easy stabbing
- Steeper taper than API Buttress (1:8 vs 1:12)
- 30 ° stab flank vs 10 ° for API Buttress
- Fast make-up
- 3 TPI vs 5 TPI for API Buttress
- Reduces cross threading and prevents thread jumpout
- Galling resistance
- Sealability through thread compound

Shoulder

- Protection against overtorque
- Additional sealing barrier
- Internally flush which eliminates turbulent flow
- Repeatable, consistent make-up position
- Reduces connection hoop stress

Connection Datasheet Generator

Blanking Dimensions

Connection	Outer Diameter	Wall Thickness	Coupling type
TMK UP TM Magna ▼	Select Outer Diameter ▼	Select Wall Thickness ▼	Coupling type ▼